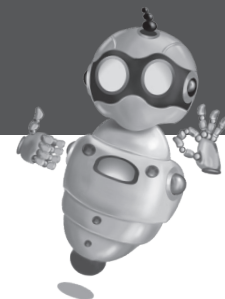


## USING A COMPUTER



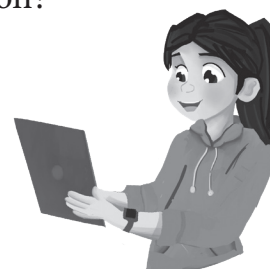
## Multiple Choice Questions

1. Which of these is used to type words on the computer?
  - a. Mouse
  - b. Keyboard
  - c. Printer
2. What do we call the part of the computer that shows us pictures?
  - a. CPU
  - b. Speaker
  - c. Monitor
3. Why do we use a mouse on the computer?
  - a. To print pictures
  - b. To point and click
  - c. To turn it on
4. What is the main job of the CPU in a computer?
  - a. To control the computer
  - b. To print documents
  - c. To show pictures
5. If you want to draw a picture on the computer, which tool would you use?
  - a. Keyboard
  - b. Mouse
  - c. Speaker
6. How can you use a USB flash drive?
  - a. To play games
  - b. To store your drawings
  - c. To turn on the computer
7. What is the difference between a keyboard and a mouse?
  - a. One is for typing, and the other is for pointing.
  - b. One makes sounds, the other doesn't.
  - c. One is for pictures, and the other is for words.
8. Why is it important to take breaks from using the computer?
  - a. To avoid getting tired eyes.
  - b. To play with friends.
  - c. To eat snacks.
9. Which of these is NOT an example of an input device?
  - a. Microphone
  - b. Scanner
  - c. Keyboard
10. Why is it important to be careful about the information we find on the computer?
  - a. Because it might be boring.
  - b. Because it might not be true.
  - c. Because it might be too long.

- 11 CPU helps \_\_\_\_\_.
- a. you type                                      b. processes information                      c. displays images
- 12 Which of these is an input device?
- a. Monitor                                      b. Printer                                      c. Keyboard
- 13 What is the function of a printer?
- a. To show pictures and words
- b. To print documents and images                                      c. To store files
- 14 Which device would you use to save files outside the CPU?
- a. Mouse                                      b. USB flash drive                                      c. Keyboard
- 15 What type of information can you find in a multimedia presentation?
- a. Only text                                      b. Only images and sound
- c. Text, images, and sound



### Vocabulary Matching



**Input Device**

A part of the computer that processes information

**Output Device**

A device that shows or prints information

**CPU**

Information that includes text, images, and sound

**Hard Disk**

A place to store files and data

**Multimedias**

A device that allows you to enter information

# USING A COMPUTER



## Sorting Devices

Look at the list of devices given below and sort each device in the correct column.



Tablet



Scanner



Keyboard



Webcam



Mouse



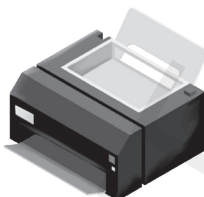
Microphone



Biometric machine



Monitor



Printer



Speakers



Headphone



Projector

**Input devices**

**Output devices**

**Application Based Questions**

1. Maham wants to create a birthday card for her friend using her computer. She uses the keyboard to type a message, the mouse to select a picture, and the printer to print the card. What input devices did Maham use to create her birthday card?  

---

---
2. When Hammad plays a video on his computer, he can see the images on the monitor and hear the music through the speakers. List the output devices Hammad is using in this scenario.  

---

---
3. Maham has a USB flash drive where she saves her school project. She shows it to her teacher using the computer's USB port. Why is a USB flash drive helpful for storing information?  

---

---

**Colour and Label**