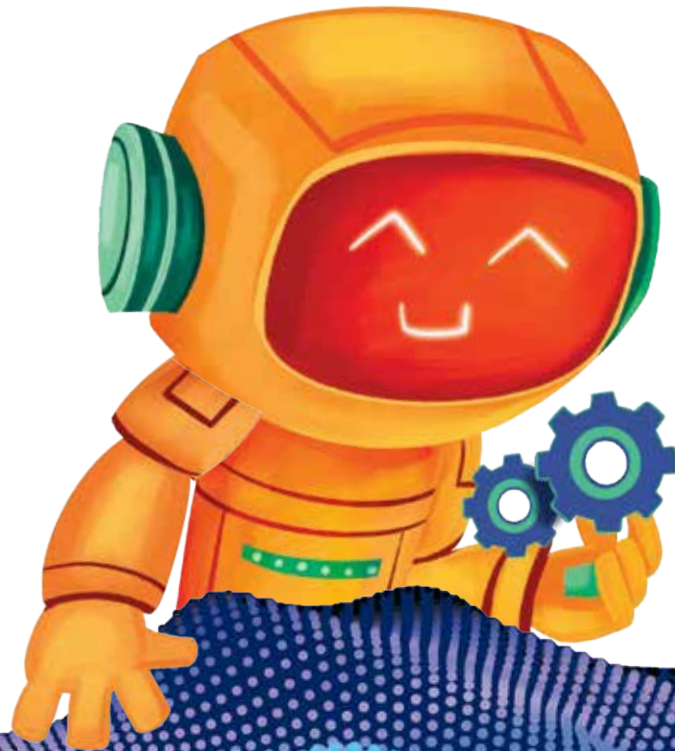


Complimentary Copy—Not For Sale

COMPUTER WHIZ

Fourth Edition

1



ANSWER
KEY

Sameena Haidermota

OXFORD
UNIVERSITY PRESS

01

INTRODUCING COMPUTERS

Suggested answers to end-of-chapter Workstation (page 8)

Explore with Whiz

Fill in the blanks

1. electricity
2. information
3. Personal Computer
4. tablet
5. personal
6. smartwatch

Whiz Quiz

1. The computer gets its power through electricity.
2. Data can include words, numbers and pictures.
3. The computer makes our work easier and faster.
4. Laptops are small in size and weight and can be easily transported from one place to the other.
5. A mobile phone or a smartphone are small enough to carry around in a pocket.

02

PARTS OF THE COMPUTER

Suggested answers to end-of-chapter Workstation (page 20)

Explore with Whiz

Circle the correct word.

1. CPU
2. pointer
3. wheel
4. Switching on
5. CPU

How do you turn a computer on and off? Number these sentences so they are in the correct order:

1. Switch on the power supply.
2. Press the POWER button on the system unit.
3. Click on the Windows button in the taskbar.
4. Click on the Power icon in the lower-right corner of the Start menu.
5. Click on the 'Shut down' command.
6. Switch off the power supply

Whiz Quiz

1. Computer hardware is anything you can touch.
2. The system unit consists of the computer's brain called the CPU or Central Processing Unit. It tells the computer what to do.
3. The wheel is located in the middle of a mouse.
4. The mouse is used to move the pointer on the screen.

Suggested answers to end-of-chapter Workstation (page 28)**Explore with Whiz****True or False**

1. False
2. False
3. True
4. True
5. True

Whiz Quiz

1. The process of writing instructions for the computer is called coding.
2. Computer programs are called apps or software.
 - a. Take pictures
 - b. Take videos

Worksheet

Identify which of the tasks can be done on a computer. Tick the tasks you can do on a computer and cross the ones you cannot.

- | | | | |
|------|------|------|------|
| a. ✓ | c. X | e. ✓ | g. ✓ |
| b. ✓ | d. ✓ | f. X | h. X |

04

LEARNING ABOUT PAINT

Suggested answers to end-of-chapter Workstation (page 35)

Explore with Whiz

Underline the correct answer.

1. Drawing area
2. Draw freehand
3. Shapes group
4. An eraser icon

You are using Tux Paint. True or false.

1. True
2. True
3. True
4. False
5. False

Whiz Quiz

1. The blank area for drawing is called the drawing area.
2. The ribbon consists of the drawing and painting tools.
3. The Eraser tool is used to remove unnecessary lines and colours.
4. In Tux Paint, the drawing area is called the drawing canvas
5. A color palette is used to add colour to our art projects.

05

SOLVING PROBLEMS

Suggested answers to end-of-chapter Workstation (page 42-43)

Explore with Whiz

1. Simple, easy
2. Sweeping, organising
3. Juice, sandwich
4. Decorations, goodies, food preparation

Whiz Quiz

1. There are six steps in the process of computational thinking.
2. The first step of computational thinking is breaking down a problem into small simple parts.
3. The second step of computational thinking is looking for patterns in these parts.

Suggested answers to end-of-chapter Workstation (page 50)**Explore with Whiz**

1. No
2. No
3. No
4. Yes
5. No

Whiz Quiz

1. The computer must be covered to protect it from dust or water.
2. Whilst interacting with others on the computer, we must take care to respect others.
3. A good digital citizen is a person who knows right from wrong, uses the computer intelligently, and respects others when interacting through the computer.
4. It is not okay to share people's work without asking them for permission.

Worksheet

- a. Correct posture should be maintained while working on a computer. Back should be straight and there should be appropriate distance between the screen and your eyes.
- b. The device must be used on a flat surface—never on a bed and the screen time should be limited to 1 or 2 hours.
- c. Do not eat or drink near the computer. Spills and crumbs can harm it.
- d. Be careful with cable wires as a device can be damaged when charging due to power surges from voltage fluctuations. Also the screen should be at eye-level.